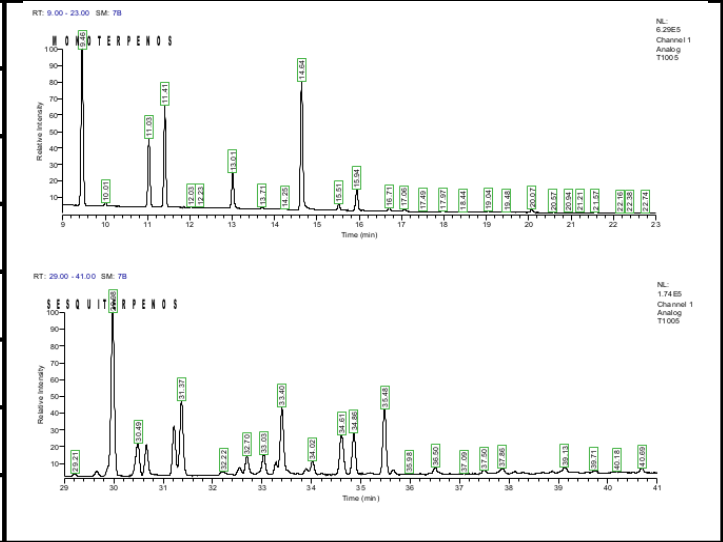


Client name:	Type of sample: Vegetal
Date of delivery: 28-05-2018	Humidity:
Sample: Critical Bilbo	Comments:
Date of analysis: 16-05-2018	N.I laboratory: M18-T1005

## MONOTERPENES

Alpha-Pinene	0.615%
Camphene	N.D.
(-)-beta-Pinene	0.282%
Beta-Myrcene	0.438%
delta-3-Carene	N.D.
Alpha-Terpinene	N.D.
p-Cymene	N.D.
d-Limonene	0.168%
Eucaliptol	--
Cis-Ocimene	N.D.
Gamma-Terpinene	N.D.
Trans-Ocimene	N.D.
Terpinolene	N.D.
Linalool	0.126%
(-)-Isopulegol	N.D.
Geraniol	N.D.

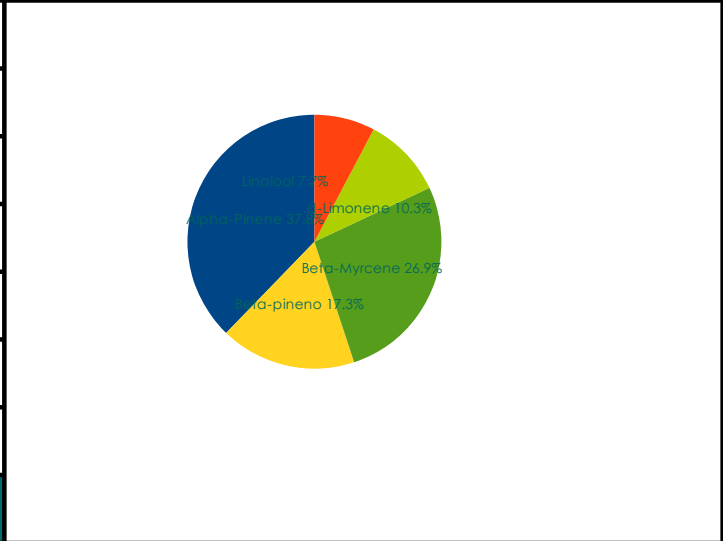
## CHROMATOGRAM



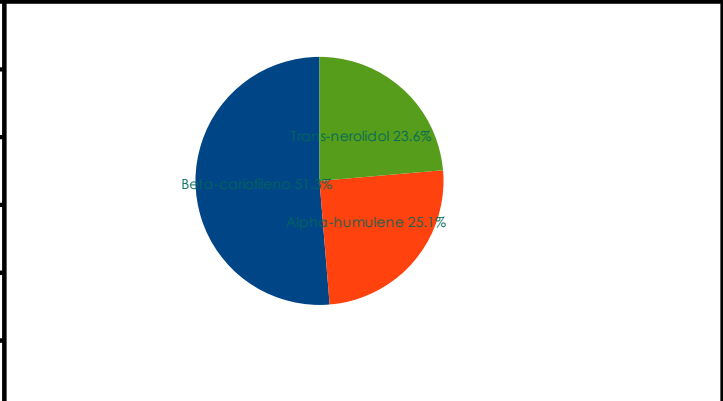
## SESQUITERPENES

Beta-caryophyllene	0.280%
Alpha-humulene	0.137%
Cis-Nerolidol	N.D.
Trans-nerolidol	0.129%
Caryophyllene oxide	N.D.
(-)-Guaiol	N.D.
(-)-alpha-Bisabolol	N.D.

## MONOTERPENES RELATIVE RATIO



## SESQUITERPENES RELATIVE RATIO



N.D.=<0.04%